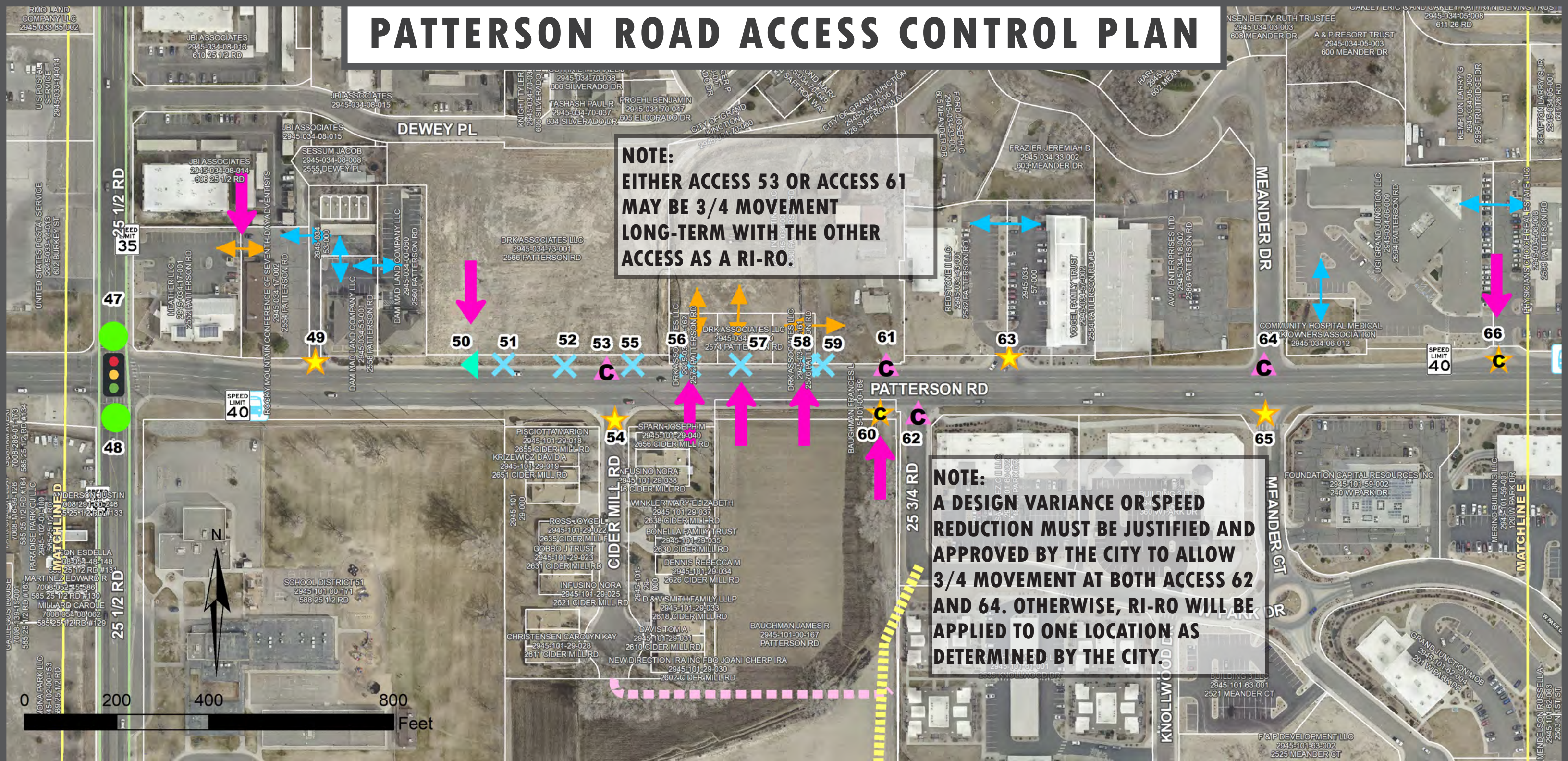


PATTERSON ROAD ACCESS CONTROL PLAN

NOTE:
EITHER ACCESS 53 OR ACCESS 61
MAY BE 3/4 MOVEMENT
LONG-TERM WITH THE OTHER
ACCESS AS A RI-RO.

NOTE:
A DESIGN VARIANCE OR SPEED
REDUCTION MUST BE JUSTIFIED AND
APPROVED BY THE CITY TO ALLOW
3/4 MOVEMENT AT BOTH ACCESS 62
AND 64. OTHERWISE, RI-RO WILL BE
APPLIED TO ONE LOCATION AS
DETERMINED BY THE CITY.



LEGEND

- BUS STOP
- BUS STOP - PULL OFF
- CROSS ACCESS
- CROSS ACCESS - PROPOSED
- PARCEL
- TRAIL

- PROPOSED CITY STREET
- PLANNED CITY STREET
- PLAN CHANGES SINCE OCTOBER 1 OPEN HOUSE

ACCESS POINT INFORMATION

- SIGNALIZED FULL MOVEMENT
- UNSIGNALIZED FULL MOVEMENT
- 3/4 MOVEMENT
- RIGHT IN - RIGHT OUT
- CLOSE
- SIGNALIZED INTERSECTION
- RIGHT IN ONLY
- RIGHT OUT ONLY
- GATED ACCESS POINT
- CONDITIONAL ACCESS POINT
SEE ACCESS TABLE FOR CONDITIONS.
TYPICALLY CLOSES WITH REDEVELOPMENT.
- CONDITIONAL SAFETY ACCESS POINT